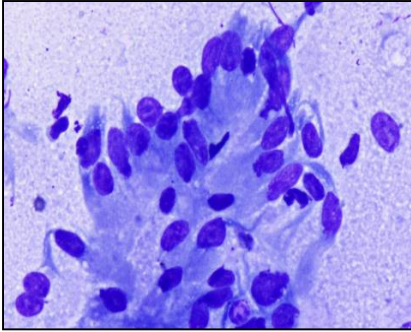
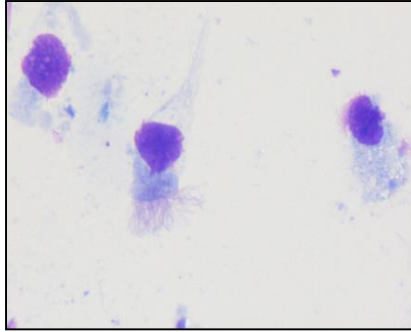


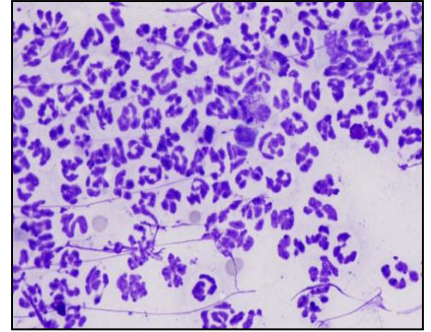
EQUINE UTERINE CYTOLOGY



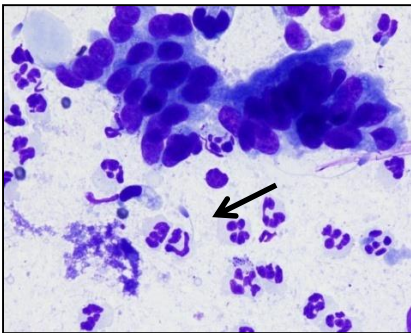
Raft of Uterine Epithelial Cells



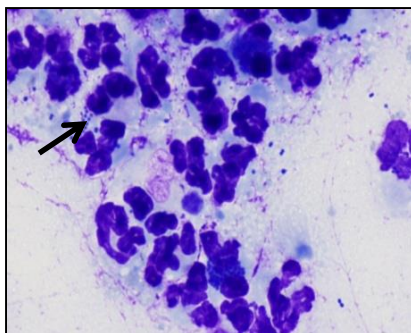
Uterine Epithelial Cells



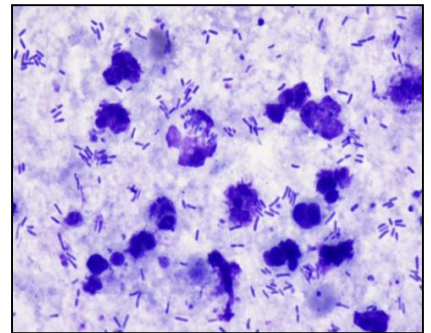
Inflammatory Cells-PMNs



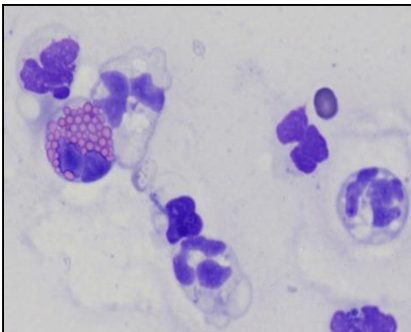
Post-Mating Endometritis



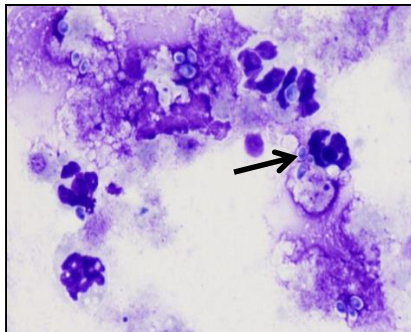
Streptococcus and WBC



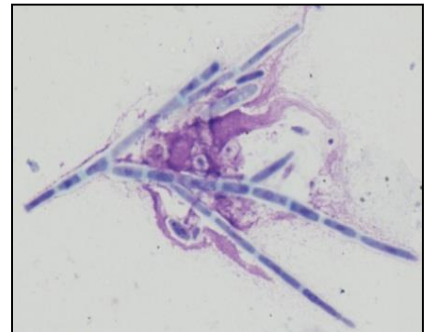
E. coli and WBC



Eosinophil and PMNs



Candida albicans



Aspergillus fumigatus

Inflammation Grade	# WBC per High Power Field (hpf)
None	0 WBC/hpf
Mild	1-2 WBC/hpf
Moderate	3-5 WBC/hpf
Severe	>5 WBC/hpf



**EQUINE REPRODUCTION
LABORATORY**
COLORADO STATE UNIVERSITY