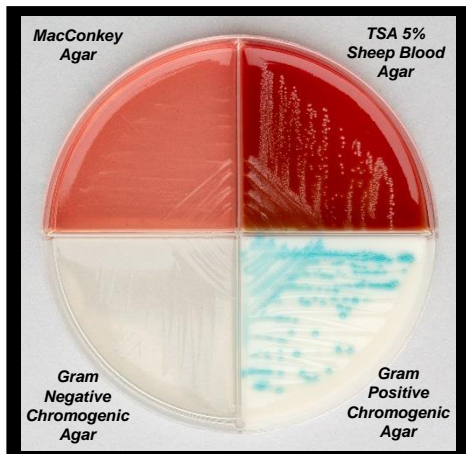
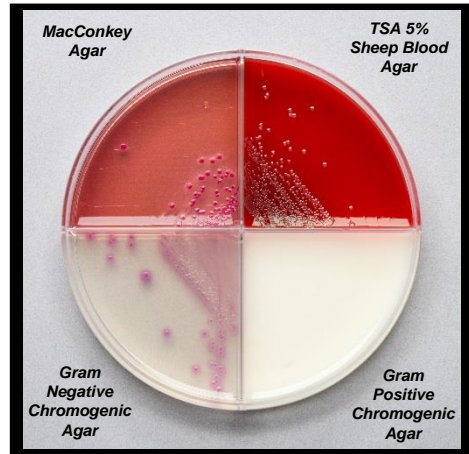


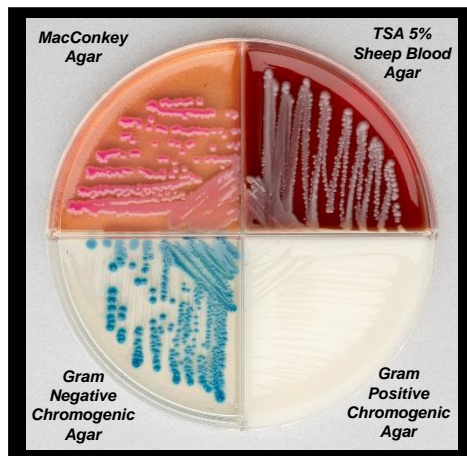
# EQUINE UTERINE CULTURE



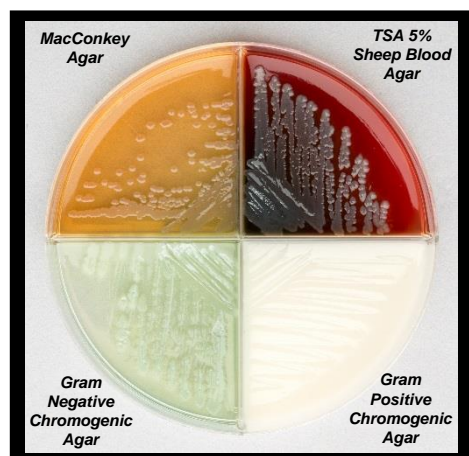
*Streptococcus equi* subsp. *zooepidemicus*



*Escherichia coli*



*Klebsiella pneumoniae*



*Pseudomonas aeruginosa*

Organism	Gram Stain	Morphology	TSA – 5% Sheep Blood Agar	MacConkey Agar	Chromogenic Agar	Comments
<i>Streptococcus zooepidemicus</i>	Positive	Cocci (ovoid, chains)	Pinpoint colonies [beta hemolysis]	No growth	Pinpoint blue colonies	
<i>Escherichia coli</i>	Negative	Rods	Circular cream colonies [+/- alpha hemolysis]	Small circular or irregular hot pink colonies	Circular or irregular pink colonies	
<i>Klebsiella pneumoniae</i>	Negative	Rods	Grey mucoid colonies	Hot pink mucoid colonies	Circular dark blue colonies [+/- slight pink halo]	Positive Urease Test [hot pink]
<i>Pseudomonas aeruginosa</i>	Negative	Rods	Irregular, flat, metallic blue or grey colonies [beta hemolysis]	Irregular cream or grey colonies	Irregular pale green or yellow colonies	"Grape-like" odor; Fluorescence with Wood's UV light

