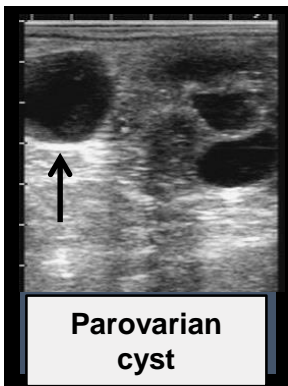
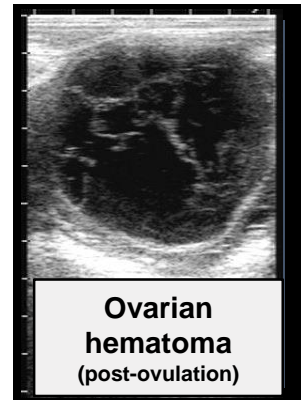
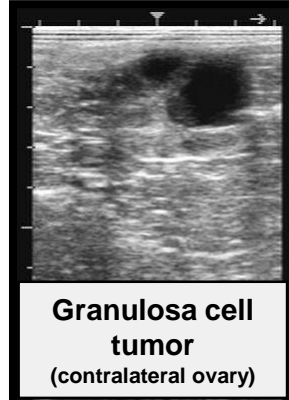
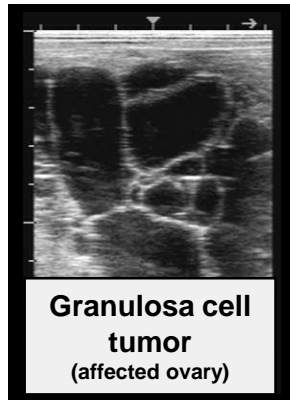
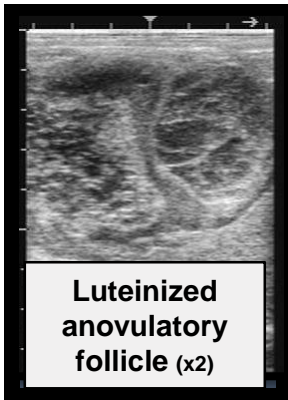
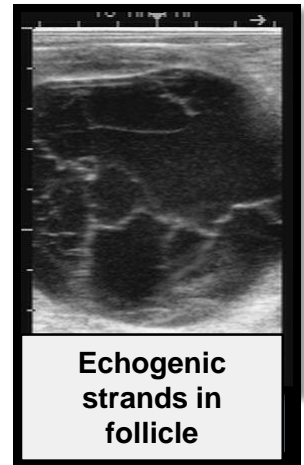
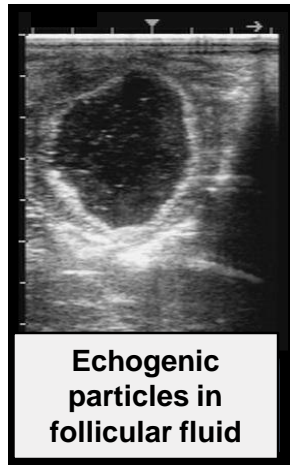
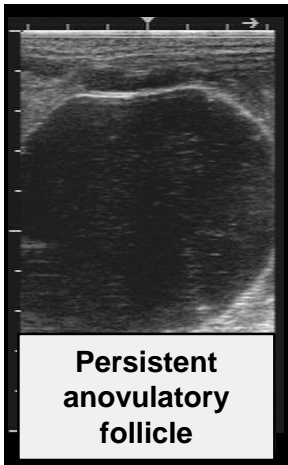


EQUINE OVARIAN PATHOLOGY



Hormone	Normal Value	Mares with GCT/GTCT
Progesterone	< 1.0 ng/ml Estrus/Anestrus > 1.0 ng/ml Diestrus/Pregnancy	< 1.0 ng/ml
Testosterone	20 to 45 pg/ml	> 50 pg/ml with GTCT
Inhibin	0.1 to 0.7 ng/ml	> 0.7 ng/ml
Anti-Müllerian Hormone	< 3.8 ng/ml	> 3.8 ng/ml

