

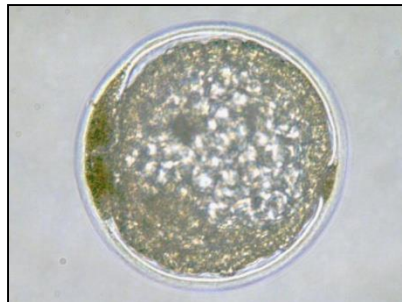
EVALUATION OF EQUINE EMBRYOS

EMBRYO QUALITY or GRADE (4-Point Scale)

Grade	Comment	Description
1	Excellent	No abnormalities observed; spherical in shape; cells of uniform size, color and texture; size and developmental stage appropriate for age post-ovulation
2	Good	Minor imperfections, such as a few extruded blastomeres or debris; slight irregularities in shape, size, color, or texture; limited separation between trophoblast layer and zona pellucida or capsule
3	Fair to Poor	Moderate level of imperfections, such as a larger percentage of extruded or degenerated blastomeres or debris; partial collapse of blastocoele; or moderate shrinkage of trophoblast from zona pellucida or capsule
4	Degenerate or Dead	Severe problems easily identified, such as a high percentage of extruded blastomeres, complete collapse of blastocoele, rupture of zona pellucida and/or capsule, or complete degeneration and embryonic death
UFO	UFO	Unfertilized oocyte



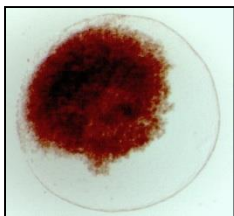
Grade 1 Blastocyst



Grade 2 Blastocyst



Grade 3 Morula



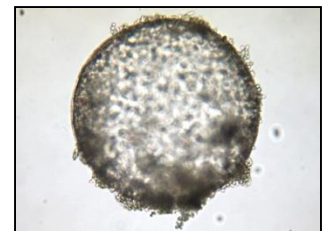
Grade 4



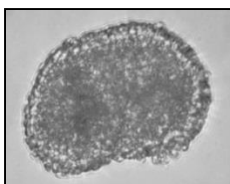
Grade 2 Morula (sperm in zona pellucida)



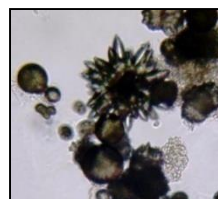
Grade 1 Early Blastocyst (cells attached)



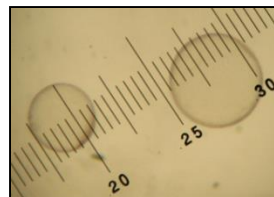
Blastocyst (debris attached)



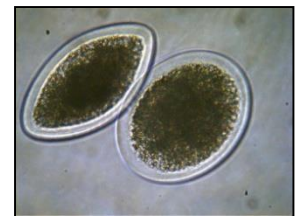
Non-Embryo (cell mass)



Non-Embryo (urine crystal and debris)



Size Determination (μm)



Unfertilized Oocyte

