



**Colorado State University**  
EQUINE REPRODUCTION LABORATORY

## **Protocol for Collection and Shipment of Ovaries for Harvesting Oocytes for Embryo Production**

1. Contact the ART program at Colorado State University to alert the team for preparation as soon as possible and obtain contracts for procedures.
  - a. ERL main line: 970-491-8626 (M-F, 8:00am – 5:00pm MST)
  - b. ART emergency line: 970-495-4389 (for all after-hours and weekend calls)
  - c. Download ART Contract
2. Remove ovaries aseptically as soon as possible (see next page for instructions).
3. Package ovaries for shipment: an Equitainer®, Styrofoam box or similar insulated shipping container can be used
  - a. **Do NOT place on ice or use frozen coolant cans**
  - b. Buffer/support ovarian tissue by surrounding with room temperature 1 L bags of saline
  - c. **If shipping time will be < 2 hr**; please ship at body temperature (37°C)
  - d. **If shipping time will be > 2 hr**; please ship at room temperature (15-20°C)
  - e. Include ovary/mare identification in shipping container
4. Organize ovary transportation. Please contact us first to determine the best method to ship.
  - a. Driver/Courier Service – if close to CSU
  - b. Overnight transporter (FedEx® or UPS®)
  - c. Counter to counter commercial plane flight + Courier Service from DIA; Designated shipper status required to ship on a plane; Closest major airport: Denver International Airport (DEN = airport code)
  - d. Chartered plane flight (DEN or Loveland, CO – regional)
5. Identify the stallion
  - a. Please ship small dose of cooled semen OR
  - b. TWO (2) straws frozen semen
  - c. Either option **MUST** arrive within 24 hours once ovaries are received; ideally frozen semen would arrive the same day as ovaries
6. Contact the ART program at Colorado State University
  - a. Confirm the ovaries & semen were received
  - b. Prepare a recipient mare following notification by ART program if embryo is intended to be shipped back to rDVM facility
7. Fee schedule is included with contract (last page).



**Colorado State University**  
EQUINE REPRODUCTION LABORATORY

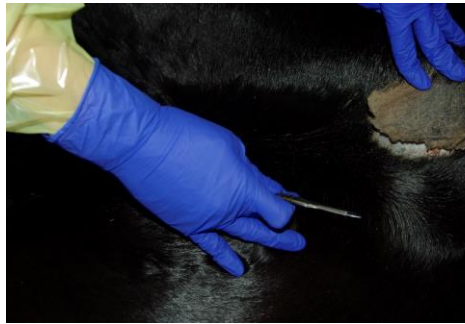
8. Shipping Address for (FedEx® or UPS®): **CSU Equine Reproduction Lab**  
**Attn: ART**  
**3101 Rampart Rd**  
**Fort Collins, CO 80521**  
**Ph: 970-491-8626**

---

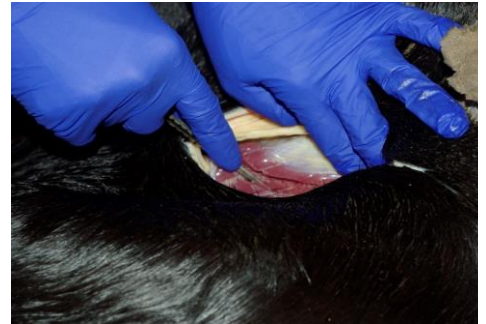
Supplies required:

- Palpation sleeves & exam gloves
- Scalpel blade & scissors
- Leak-proof plastic baggies x 3
- Room temp 1L saline bags x 3

Make incision halfway between the last rib and point of hip



Incise through skin & muscle but bluntly through peritoneum, carefully avoiding GI contamination



Remove contralateral ovary first to facilitate ease of ipsilateral ovary removal secondarily



Rinse with room temp embryo flush solution, saline or LRS until ovarian surface clean



Double bag within leak-proof plastic bag with small amount of fluid for transport

